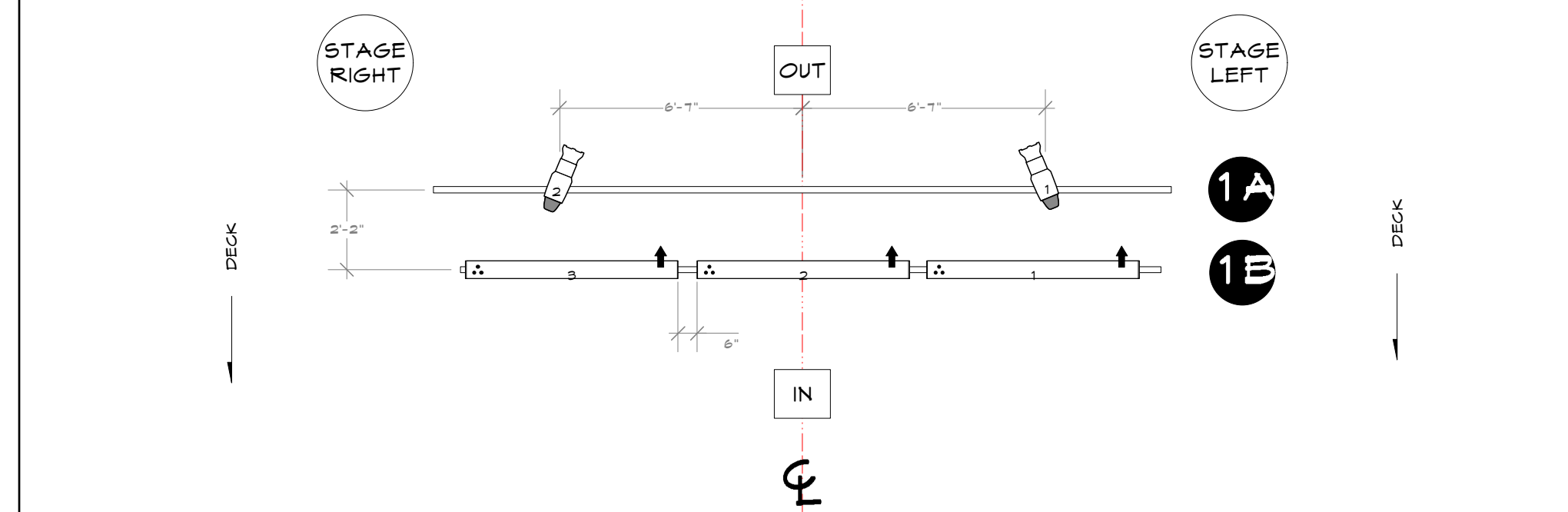
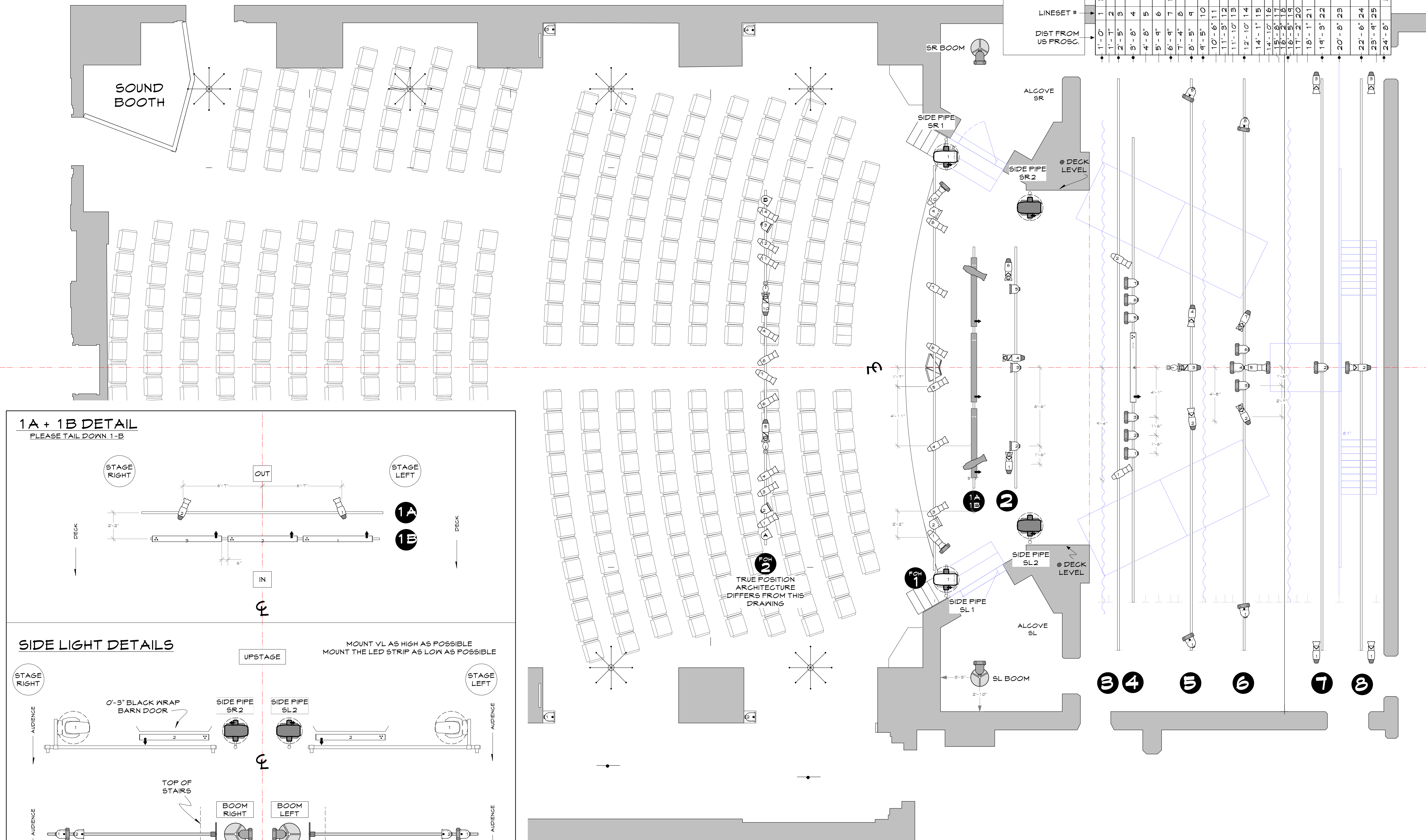
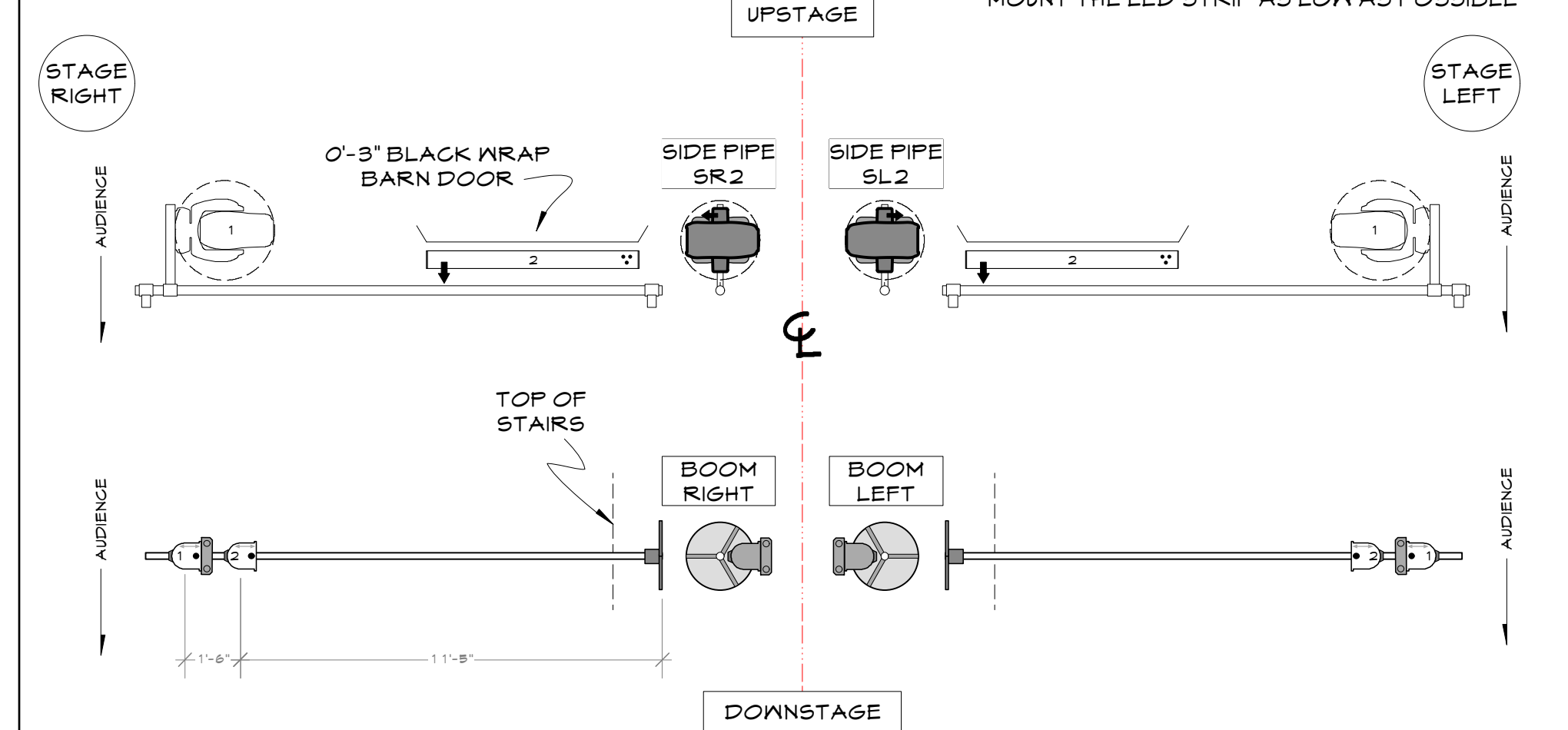


1A + 1B DETAIL
PLEASE TAIL DOWN 1-B



SIDE LIGHT DETAILS



VERTICAL TRIM (TO HOUSE DECK)	PIECE	LINESSET #	DIST FROM US PROSC.
16'-6"	DS LEAF BORDER	1	1'-0"
17'-1"	NO. 3 ELECTRIC	2	1'-7"
14'-9"	NO. 4 ELECTRIC	3	2'-5"
		4	3'-0"
		5	4'-0"
16'-7"	MID LEAF BORDER	6	5'-9"
16'-9"	NO. 5 ELECTRIC	7	6'-4"
		8	7'-4"
		9	8'-5"
		10	9'-5"
		11	10'-6"
		12	11'-9"
		13	11'-10"
		14	12'-10"
		15	14'-1"
		16	14'-10"
		17	15'-0"
		18	16'-2"
		19	16'-5"
		20	17'-2"
		21	18'-1"
		22	19'-3"
		23	20'-8"
		24	22'-6"
		25	23'-9"
			24'-8"

KEY

- FIN SPOT 675W
- BIRDIE M 16, MFL JDR 675W
- ETC SOURCE 4 10' 6750W
- ETC SOURCE 4 36' 6750W
- ETC SOURCE 4 50' 6750W
- ETC SOURCE 4 14' 6750W
- ETC SOURCE 4 FAR, MFL 6750W
- ETC SOURCE 4 FAR, MFL 6750W
- ETC SOURCE 4 FAR, VNSP 6750W
- Chroma Q Color Force T2 6600W
- Vari-Lite VL350Q, TUNGSTEN ERS 61000W
- WILDFIRE 6777W
- HYPERON COLOUR SCROLLER
- MANUAL IRIS
- DMX IRIS
- GOGO/TEMPLATE
- ROSCO 1-CUE

LEGEND

FAR AXIS ROTATION OF SILK AXIS ON STRIPS

UNIT

NOTES

- "A", "B", ETC. AS UNIT # INDICATES WORK LX
- ALL TRIMS ARE FROM HOUSE DECK TO CENTER OF PIPE
- PIPES & BIRDIES @ FIRST FLOOR SCAFFOLDING CEILING. (# DISPLAYED IS CHANNEL)
- CONFIRM PLACEMENT OF ALL LADDERS AND BOOMS PRIOR TO SECURING IN PLACE.
- ARROWS ON DMX FIXTURES INDICATE LOCATION OF CABLE TAIL
- HANG ALL LEKOS WITH BARREL ALL THE WAY OUT.

SET DRAWING IS APPROXIMATE, DO NOT USE THIS PLOT FOR SCENIC PURPOSES

WRITTEN DIMENSIONS SHALL HAVE PRECEDENCE OVER SCALED DIMENSIONS.

CONTACT DESIGNER IN EVENT OF DISCREPANCY.

THESE DRAWINGS AND ALL DESIGNS REMAIN THE PROPERTY OF THE DESIGNER AND MAY NOT BE USED OTHER THAN FOR THE EXPRESS PURPOSE OF EXECUTING THE LIGHTING DESIGN FOR THE PROJECT AND CLIENT SPECIFIED.

NO	DATE	REVISION
A	12/06/14	PRELIMINARY ISSUE
B	12/07/14	FIRST ISSUE
C	12/11/14	SECOND ISSUE
D	12/24/14	THIRD ISSUE
E	12/28/14	FINAL ISSUE

HART HOUSE THEATRE

DIRECTED BY: LUKE BROWN
SCENERY BY: LAURA GARDNER
LIGHTING BY: GEORGE QUAN

GROUNDPLAN BY UNIT

SCALE: 1/4" = 1'-0" DATE: 12/28/2014
EXCEPT WHERE NOTED

DRAWN: GEORGE QUAN

1 OF 2